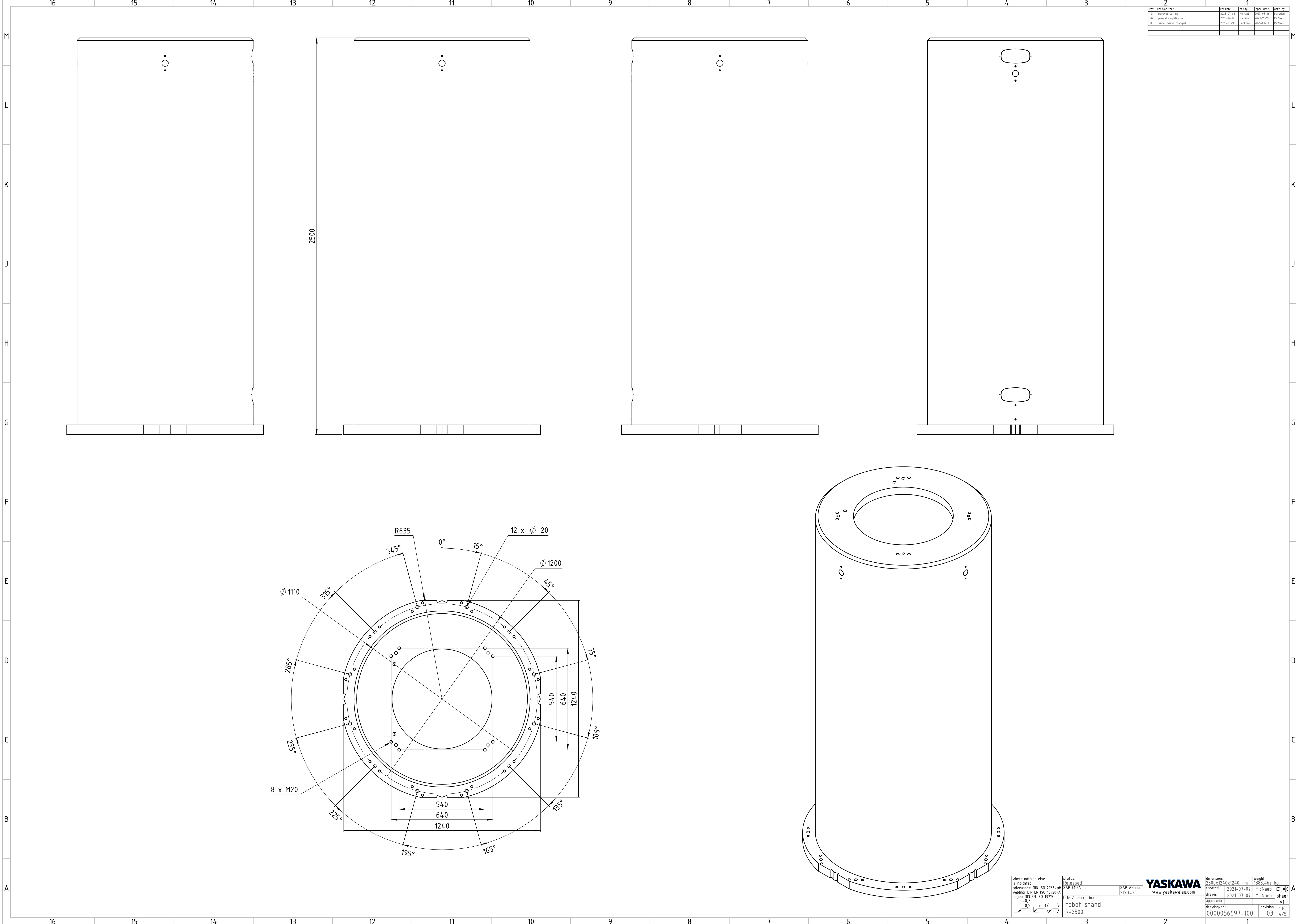


CONFIDENTIAL The reproduction, distribution and utilization of this document as well as the communication of its content to third parties without the prior written consent of YASKAWA EUROPE LTD. is strictly prohibited. In the event of a patent, utility model or design, all rights reserved in the event of the grant of a patent, utility model or design.



rev	revision text	rev date	rev by	appr. date	appr. by
01	improved outline	2021-07-06	MichNaeb	2021-07-06	MichNaeb
02	general simplification	2021-02-26	MichNaeb	2021-02-26	MichNaeb
03	center marks changed	2025-01-10	Landfire	2025-01-10	MichNaeb

where nothing else is indicated: tolerances: DIN ISO 2768-mS welding: DIN EN ISO 13920-A edges: DIN EN ISO 13715 -0.3 -0.5 -0.3 (L)	status: Released SAP EMEA no: SAP AH no: 219343	<b>YASKAWA</b> www.yaskawa.eu.com	dimension: 2500x1240x1240 mm created: 2021-07-07 drawn: 2021-07-07 approved: 0000056697-100	weight: 1363.467 kg sheet: A1 revision: 03 1:10 4/5
---	---	--------------------------------------	--	--