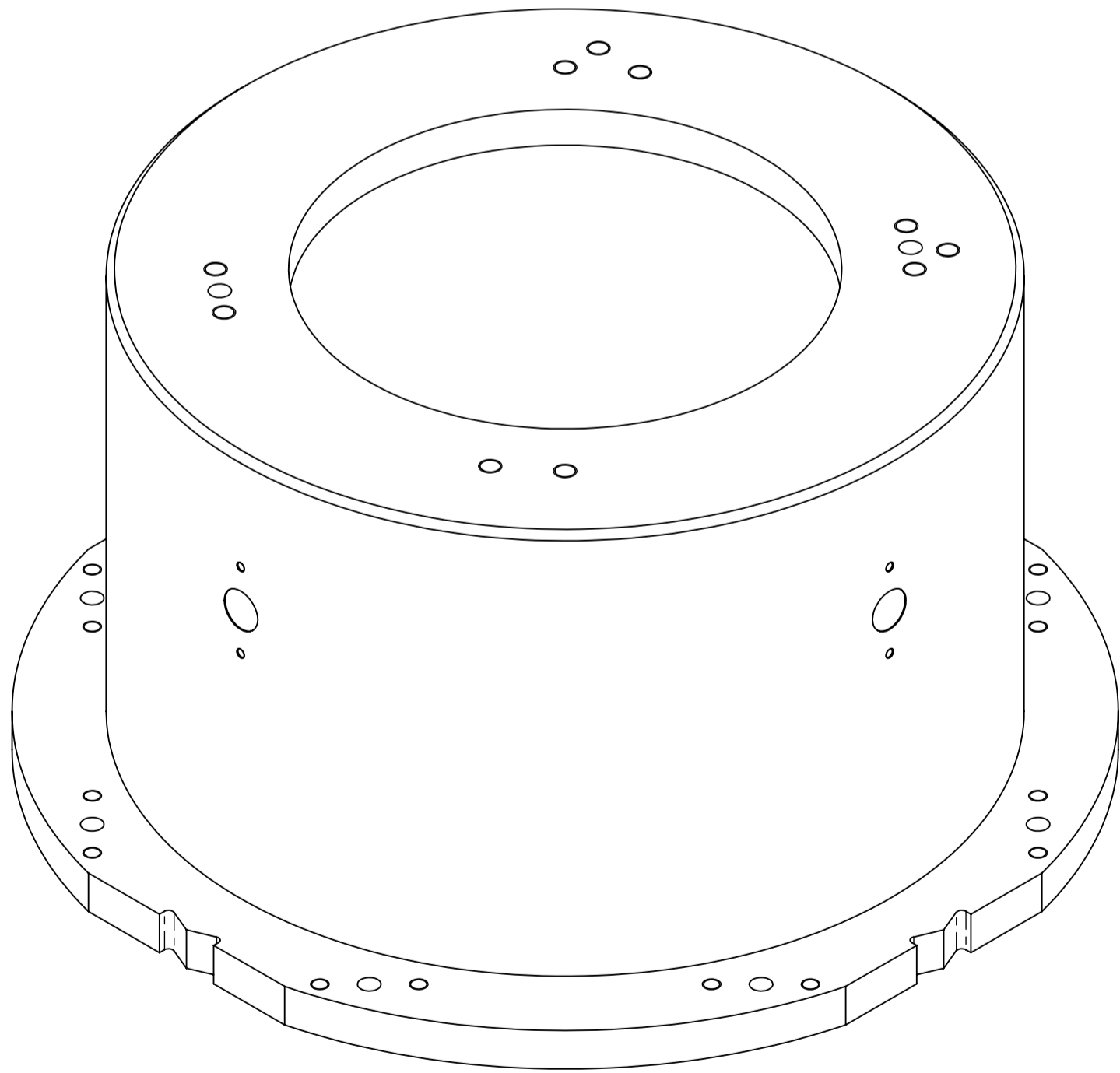
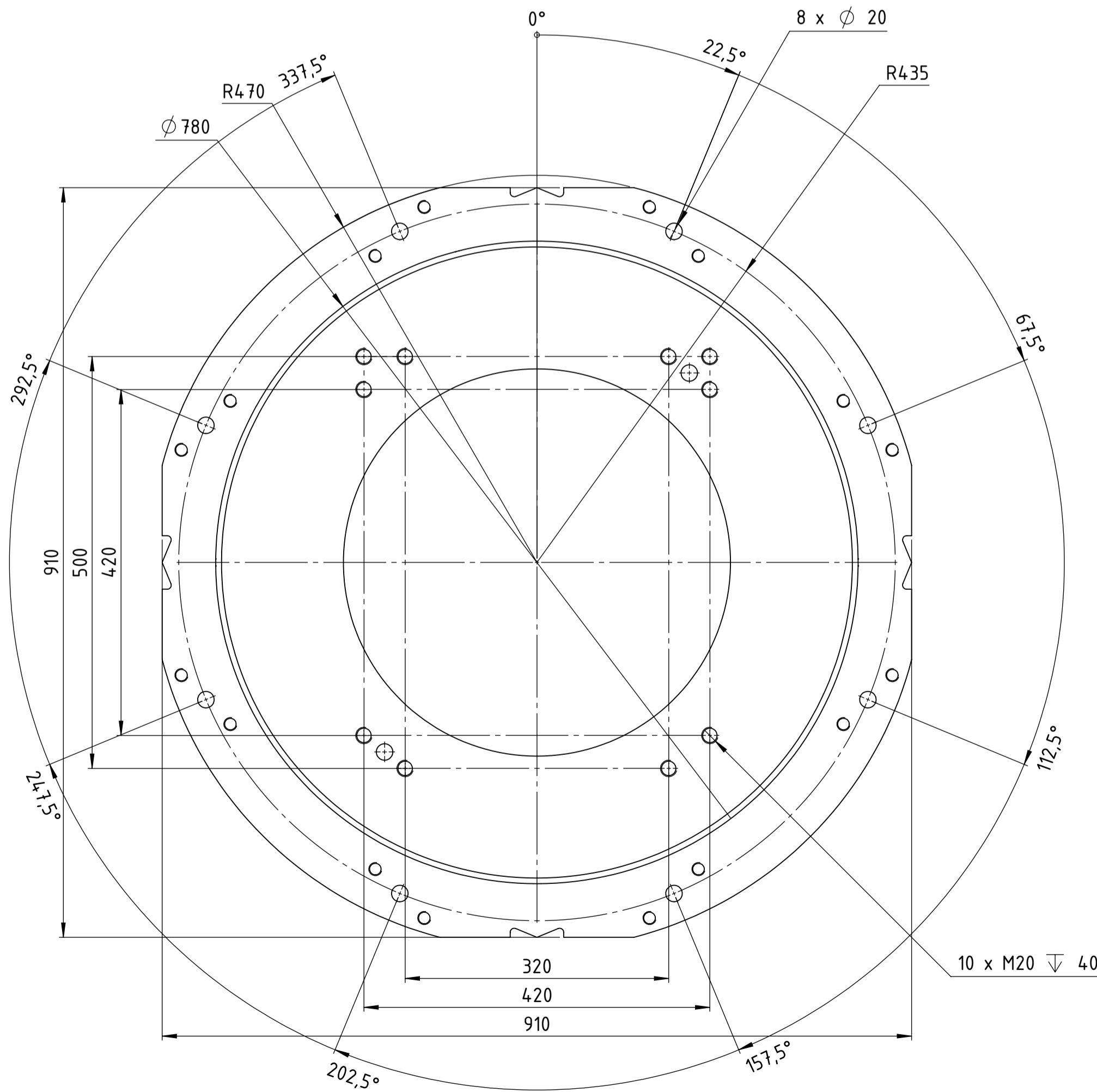
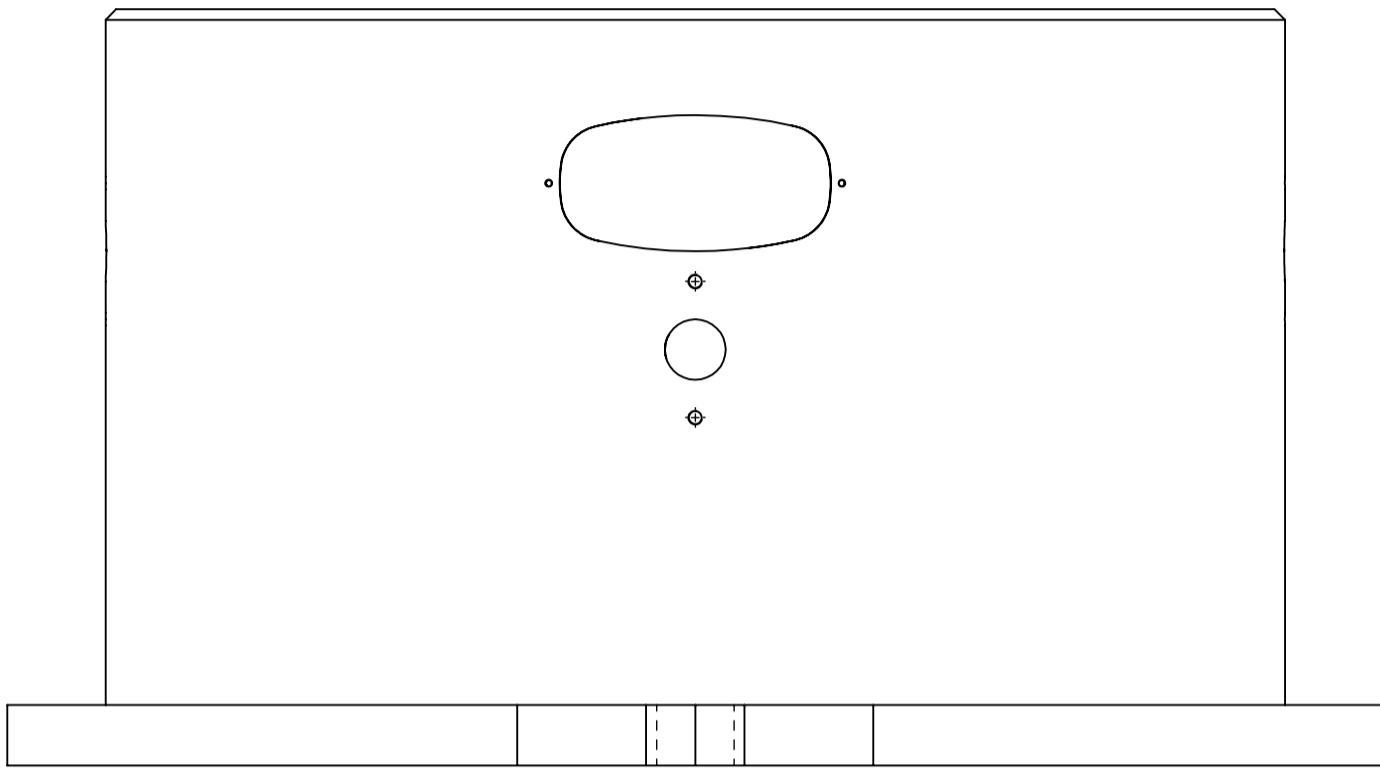
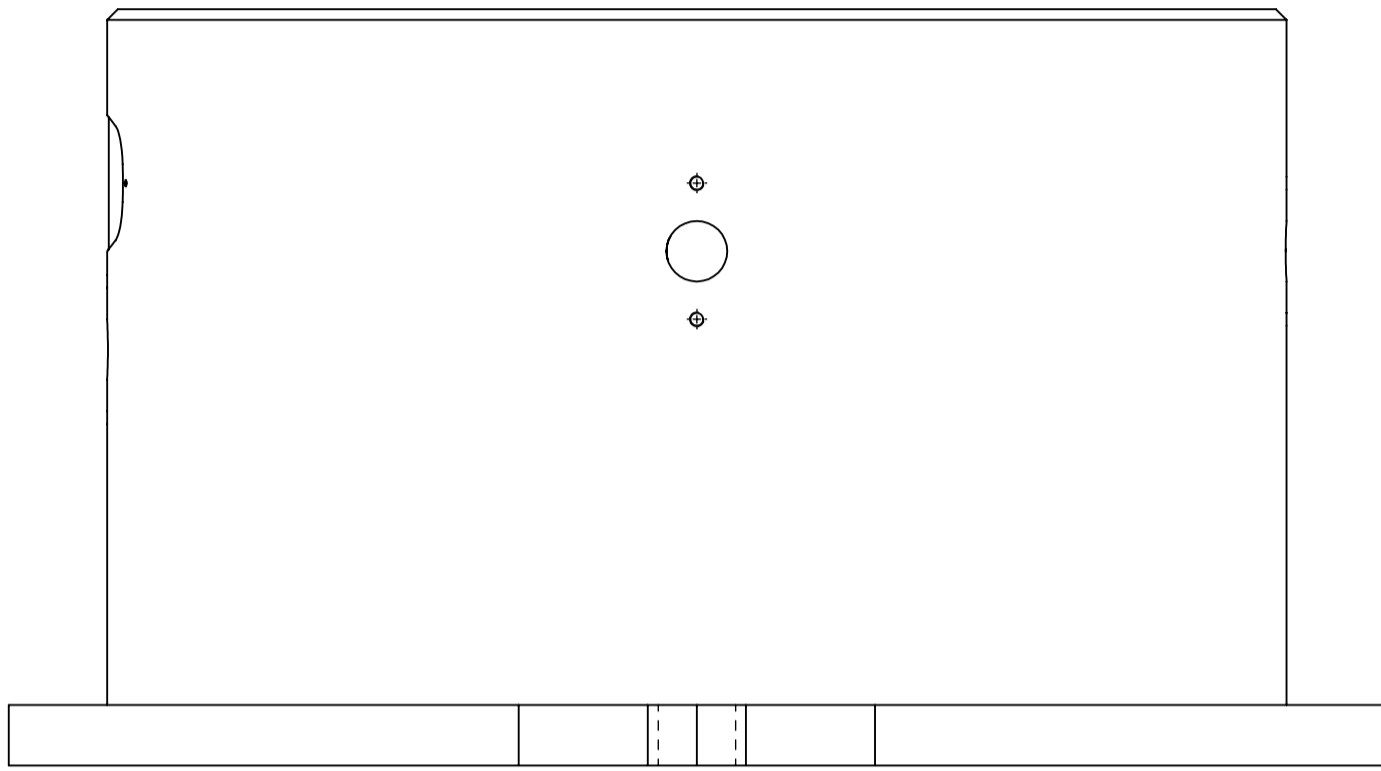
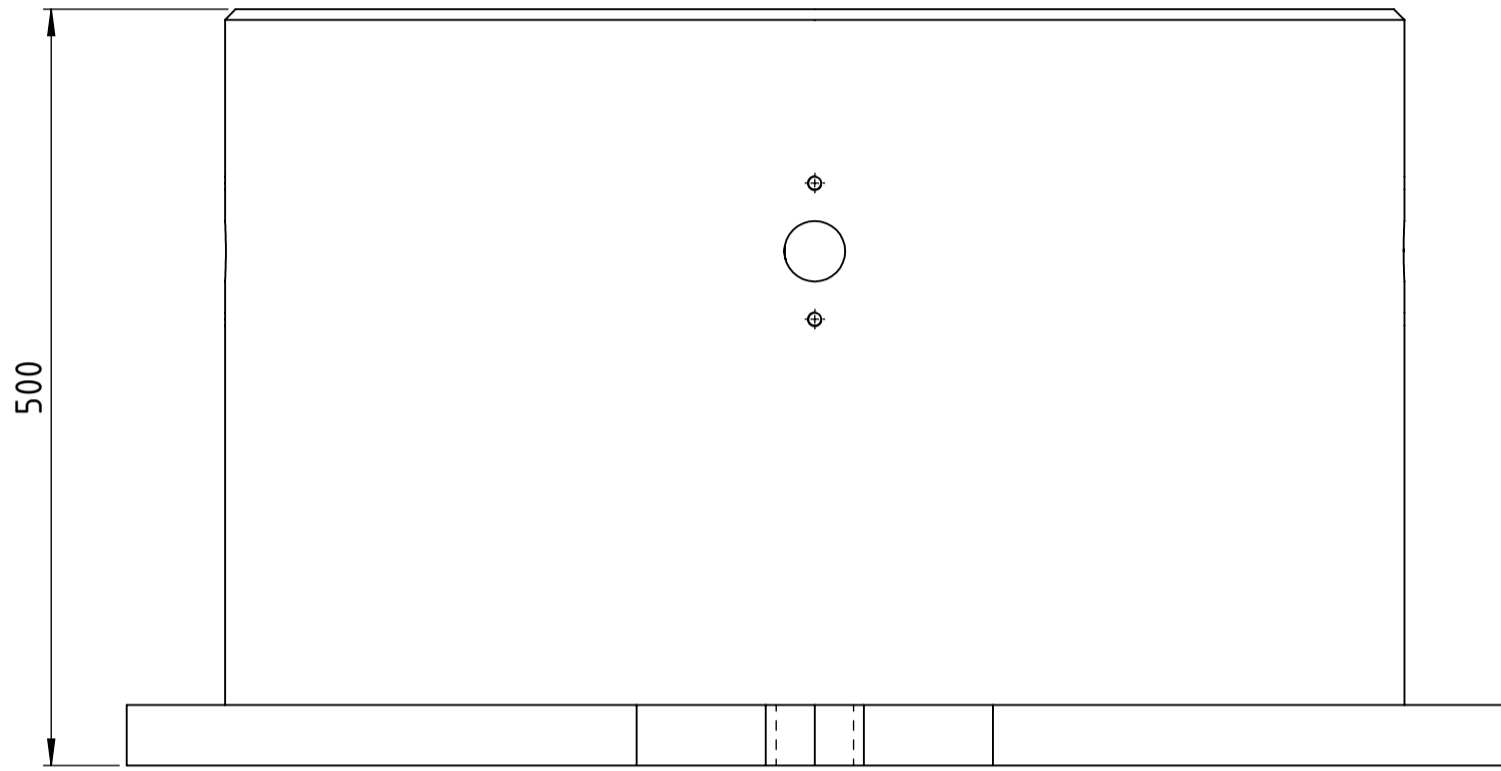
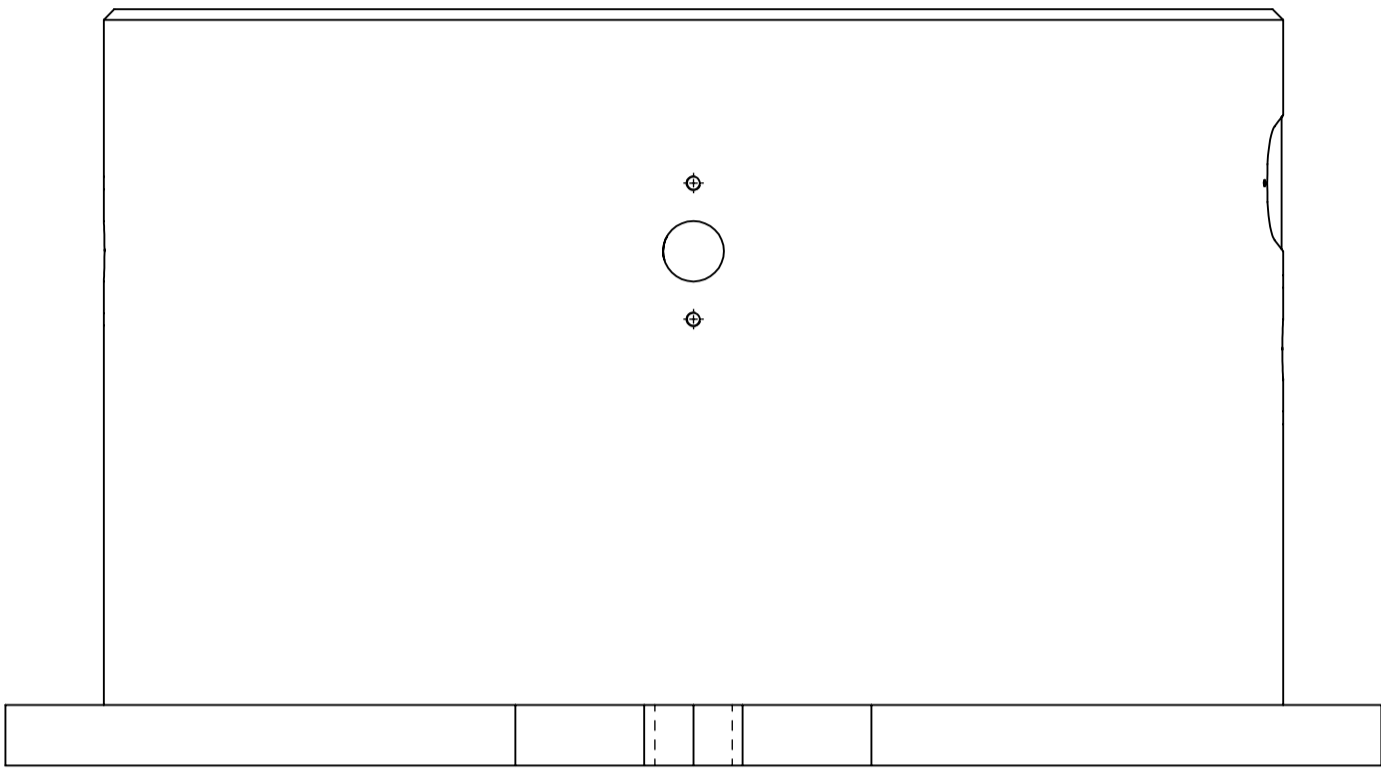


The reproduction, distribution and utilization of this document as well as the communication of its content to third parties without the written permission of Yaskawa Europe B.V. is prohibited. The payment of damages. All rights reserved in the event of a patent, utility model or design.



rev.	revision text	rev.date	rev.by	appr. date	appr. by
01	general simplification	2023-07-19	Michael	2023-07-19	Michael
02	color marks changed	2023-07-19	Michael	2023-07-19	Michael

where nothing else is indicated tolerances: DIN ISO 2768-mS welding: DIN EN ISO 15920-A no sharp edges	status: Released		dimension: 310x910x500 mm		weight: 190,523 kg
	SAP EHEA no: 230780		created: 2023-07-19		drawn: 2023-07-19
	approved: 2023-07-19		drawing-no: 0001060793-100		revision: 03
	title / description: robot stand P-500		sheet: A1		15 4/5

YASKAWA

www.yaskawa.eu.com